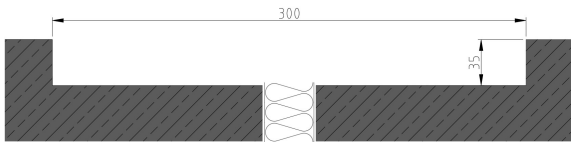


## Execution with floating layer (e.g.: Sikafloor coating systems) of the coating material as a connecting joint.

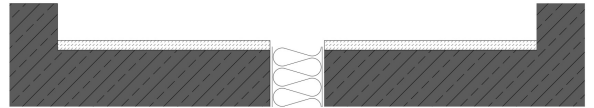
### Example: FP 90/25 NI SS

[also valid for series FP(G) 80, FP(G) 90, FP(G) 110, FP 130 and FP 155]

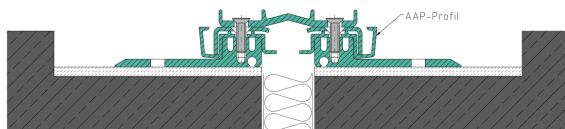
- 1 Cleaning and priming of the installation recess.



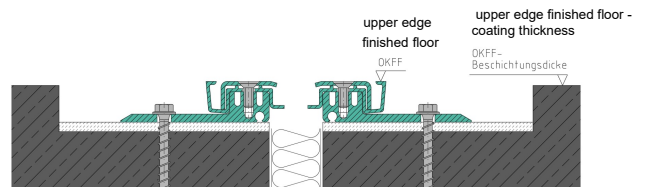
- 2 Application of a levelling (compensation) layer with a pressure resistant, shrinkage-free and waterproof mortar.



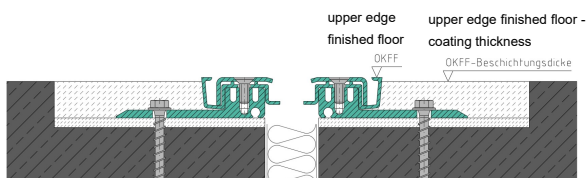
- 3 Cleaning, degreasing and priming of the aluminium brackets and height adjusted levelling of the joint cover into the still fresh compensation layer (upper edge of joint cover is at the upper edge of the finished floor level and thus above the adjacent covering -by the coating thickness).



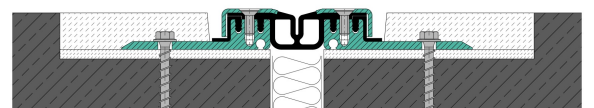
- 4 After the compensation layer has hardened fix the perforated aluminium brackets on both sides (outer row of holes, with chemical anchors or screw anchors, distance max. 350 mm) and remove the spacers.



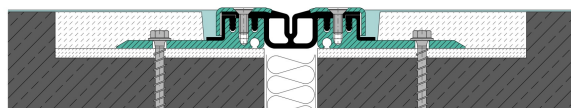
- 5 Filling and surface-flush finishing of the installation recess, with a pressure-resistant and shrinkage-free mortar, **impermeable to water**.



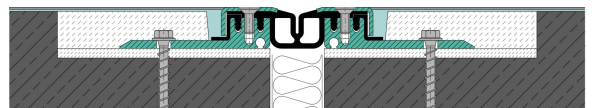
- 6 Dismantling of AAP profiles and removing of round rubber cords and red protection caps. Pressing in the middle insert and the short AAS sheets and compression with the stainless steel cover caps and countersunk screws incl. nylon sealings.



- 7 Applying of floating layer and void-free filling of connection joint with floating layer of coating system (e.g. Sikafloor coating systems).



- 8 Working on the wear layer to the outer edge and the upper edge of the stainless steel cover.



- 9 After approx. 14 days retighten all fixing screws of the stainless steel cover caps, with a torque wrench (7 NM).

**This installation procedure is to be handed over to the building owner for forwarding to the coating company or to be given to the coating company directly!**